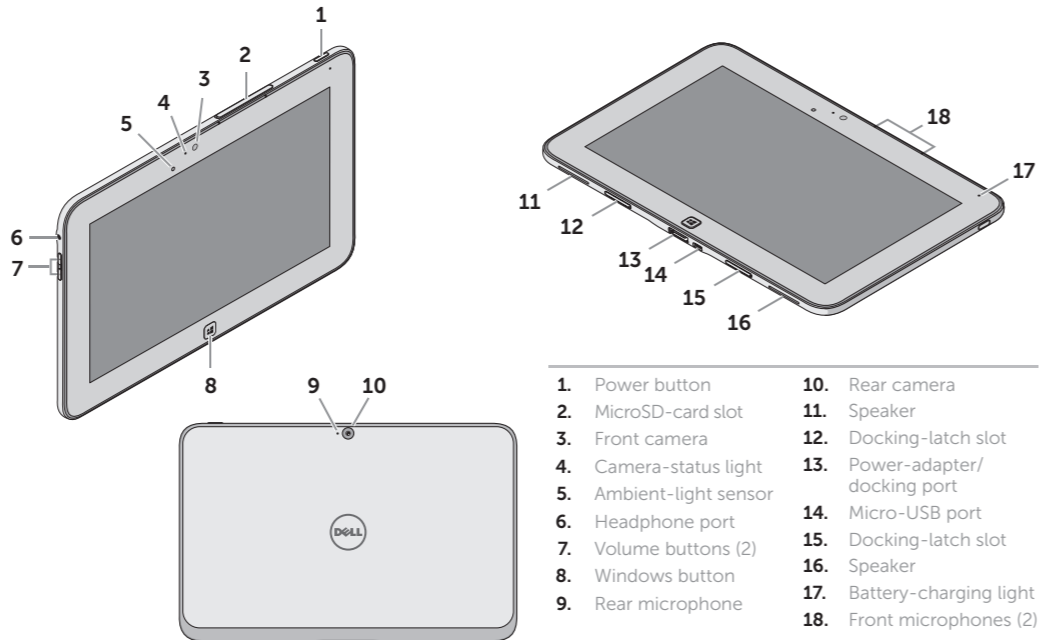


Quick Start Guide

快速入门指南



About Your Tablet 关于您的平板电脑



- | | |
|----------------|-----------------|
| 1. 电源按钮 | 10. 后置摄像头 |
| 2. MicroSD 卡插槽 | 11. 扬声器 |
| 3. 前置摄像头 | 12. 对接门锁插槽 |
| 4. 摄像头状态指示灯 | 13. 电源适配器/对接端口 |
| 5. 环境光传感器 | 14. 微型 USB 端口 |
| 6. 耳机端口 | 15. 对接门锁插槽 |
| 7. 音量按钮 (2 个) | 16. 扬声器 |
| 8. Windows 按钮 | 17. 电池充电指示灯 |
| 9. 后置麦克风 | 18. 前置麦克风 (2 个) |

- | | |
|-------------------------|------------------------------------|
| 1. Power button | 10. Rear camera |
| 2. MicroSD-card slot | 11. Speaker |
| 3. Front camera | 12. Docking-latch slot |
| 4. Camera-status light | 13. Power-adapter/
docking port |
| 5. Ambient-light sensor | 14. Micro-USB port |
| 6. Headphone port | 15. Docking-latch slot |
| 7. Volume buttons (2) | 16. Speaker |
| 8. Windows button | 17. Battery-charging light |
| 9. Rear microphone | 18. Front microphones (2) |

Before Sending Your Tablet for Repair

Dell may reset your tablet to factory settings to resolve the issue with your tablet. Back up your data before sending your tablet for repair.

将您的平板电脑送回维修之前

为了解决您平板电脑的问题，Dell 可能将您的平板电脑复位到出厂设置。在将您的平板电脑送回维修之前，请备份您的数据。

More Information

For more information on your tablet, see the *User's Manual* available on your tablet or dell.com/support.

更多信息

有关您平板电脑的更多信息，请参阅可在您的平板电脑或 dell.com/support 上获取的**用户手册**。

© 2012 Dell Inc.

Dell™, the DELL logo, and XPS™ are trademarks of Dell Inc.

© 2012 Dell Inc.

Dell™、DELL 徽标和 XPS™ 是 Dell Inc. 的商标。

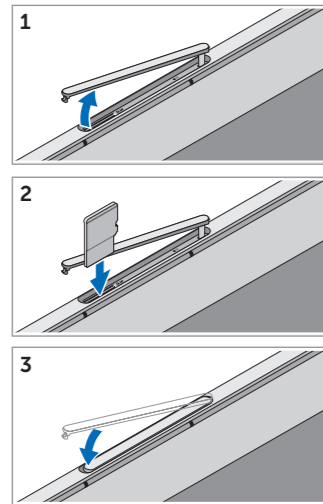
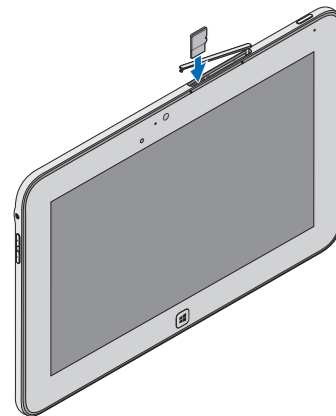


OXNVVXA00

Setting Up Your Tablet 设置您的平板电脑

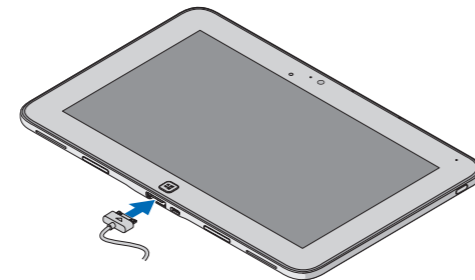
Insert the microSD card (optional)

插入 microSD 卡 (可选)



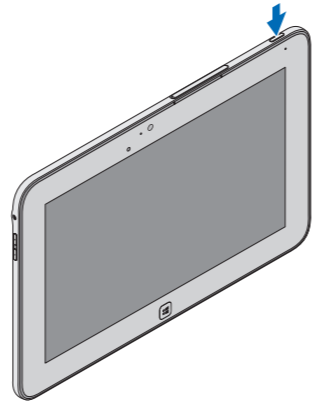
Charge the battery (at least 4 hours)

给电池充电 (至少 4 个小时)



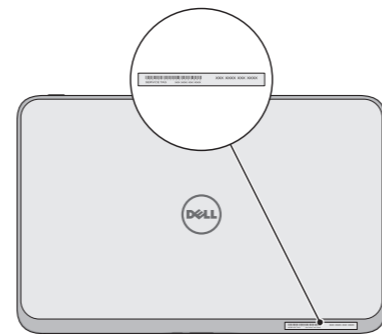
Press and hold the power button to turn on the tablet

按住电源按钮即可开启平板电脑



Locate the Service Tag

找到服务标签



Windows 8

Tiles 图块



Swipe to access more tiles

滑动访问更多图块

Resources 资源



Charms sidebar Charms 边栏



Getting started

入门指南

My Dell Support Center

我的 Dell 支持中心

Swipe from right edge of the display

从显示屏的右边缘滑动